



# V2 CONSULTING LIMITED

Testing & Solution





## NON-DESTRUCTIVE TESTING SERVICE

Whether it is in manufacturing, fabrication or in-service inspections, our non-destructive testing services are in place to ensure your product integrity and reliability, to control manufacturing processes, lower production costs and to maintain a uniform quality level.

Personnel employed by V2 CONSULTING LTD have wide track record with proven performance on new construction, pipeline installation, in-service inspection and expansion projects as the NDT solution provider.

V2 CONSULTING LTD's scope of services covers both conventional and advanced NDT systems, provided by qualified inspectors to international standards.

V2 CONSULTING LTD understands better than most that the excellence of any service commences with quality and the implementation of detailed and effective inspection procedures, appropriate equipment and most of all our professional people.

V2 CONSULTING LTD's NDT inspectors are suitably trained, multifunctional and prepared to be available whenever our services are required.

V2 CONSULTING LTD creates added value to your business by looking for the fastest inspection methods, integrating our workforce into your daily activities, combining technologies and carefully listening to your needs. When you need to save overall costs, improve quality and want to be sure of reliable production or operating processes, NDT is the toolset you need.







V2 CONSULTING LTD IS YOUR RELIABLE PARTNER

## RIGHT SERVICE – MAXIMUM RETURN

We have equipped ourselves with management system which conforms to ISO/IEC 17025: 2005 and obtained HOKLAS accreditation from Hong Kong Accreditation Service.

V2 CONSULTING LTD  
Continuously develops its  
services and applications.

Our NDT applications are  
summarized as below.

The list is not exhaustive.

### STANDARD TESTING METHODS

#### HOKLAS accredited:

- Visual Inspection (VI)
- Dye/Liquid Penetrant Testing (PT)
- Magnetic Particle Testing (MT)
- Manual Ultrasonic Testing (UT)
- Tensile Proof Load Test (PLT)
- Radiographic Testing (RT)

Constantly we are striving to utilize various technologies to help our clients to achieve better solutions. Below are **OTHER NDT METHODS** that we will place into service:

- Positive Material Identification (PMI)
- Ultrasonic Phased Array (PAUT)
- Through Painting Ultrasonic Thickness Gauging (UTG)

- Hardness Measurements (HT) – Barcol, UCI
- Surface Roughness Testing
- Leak Test (Vacuum Box Testing)
- Eddy Current Testing (ET)
- Remote Visual Inspection (Borescope Inspection)
- Painting Inspection
- Magnetic Flux Leakage Testing (MFL)

### HEAT TREATMENT

With 15+ Nos of heat treatment equipment and recorders, we have been actively taking part in major power plant expansion projects since 2018.

- Preheat
- Bake Out
- Post Weld Heat Treatment

### INSPECTION/EXPEDITION SERVICE

- Visual inspection
- Dimension check
- Welding Procedure Qualification Test
- Welder Qualification Test, etc.

- Project Expedition

### EXAMPLE APPLICATIONS

- Shop resident inspections during and after manufacturing
- Shutdown inspections (visual, NDT)
- **Offshore** pipeline and steel structure construction

### VARIOUS SERVICE LOCATIONS

- Hong Kong sites – Onshore & Offshore

- Mainland workshops

With our well-established group partner WENS, we are able to provide support in:

- India
- Singapore
- Indonesia
- Malaysia
- Myanmar
- Dubai
- Macau

### SHARING KNOWLEDGE

V2 CONSULTING LTD trains and certifies people to the highest inspection standards.





## HEAT TREATMENT SERVICE

V2 CONSULTING LTD offers its clients with **Pre-heating, Bake-out** and **Post Weld Heat Treatment (PWHT)** services.

### PROJECTS

- HEC Lamma Power Station – Unit 10, 11, 12 Expansion

Materials Involved: 9Cr, 1Cr, 2Cr

Equipment Handled: 6 Channels, 60 kW, 3 Phase

- CLP – Unit D1, Black Power Point Station

Materials Involved: 9Cr, 1Cr, 2Cr

Equipment Handled: 6 Channels, 60 kW, 3 Phase







## Positive Material Identification (PMI)

V2 CONSULTING LTD offers its clients with **PMI** for component and weld analysis.

### PROJECTS

- CLP – Unit D1, Black Power Point Station

Materials Involved: 9Cr, 1Cr, 2Cr

Equipment Handled: Olympus DE-2000



## UCI Hardness Test & Barcol Hardness Test

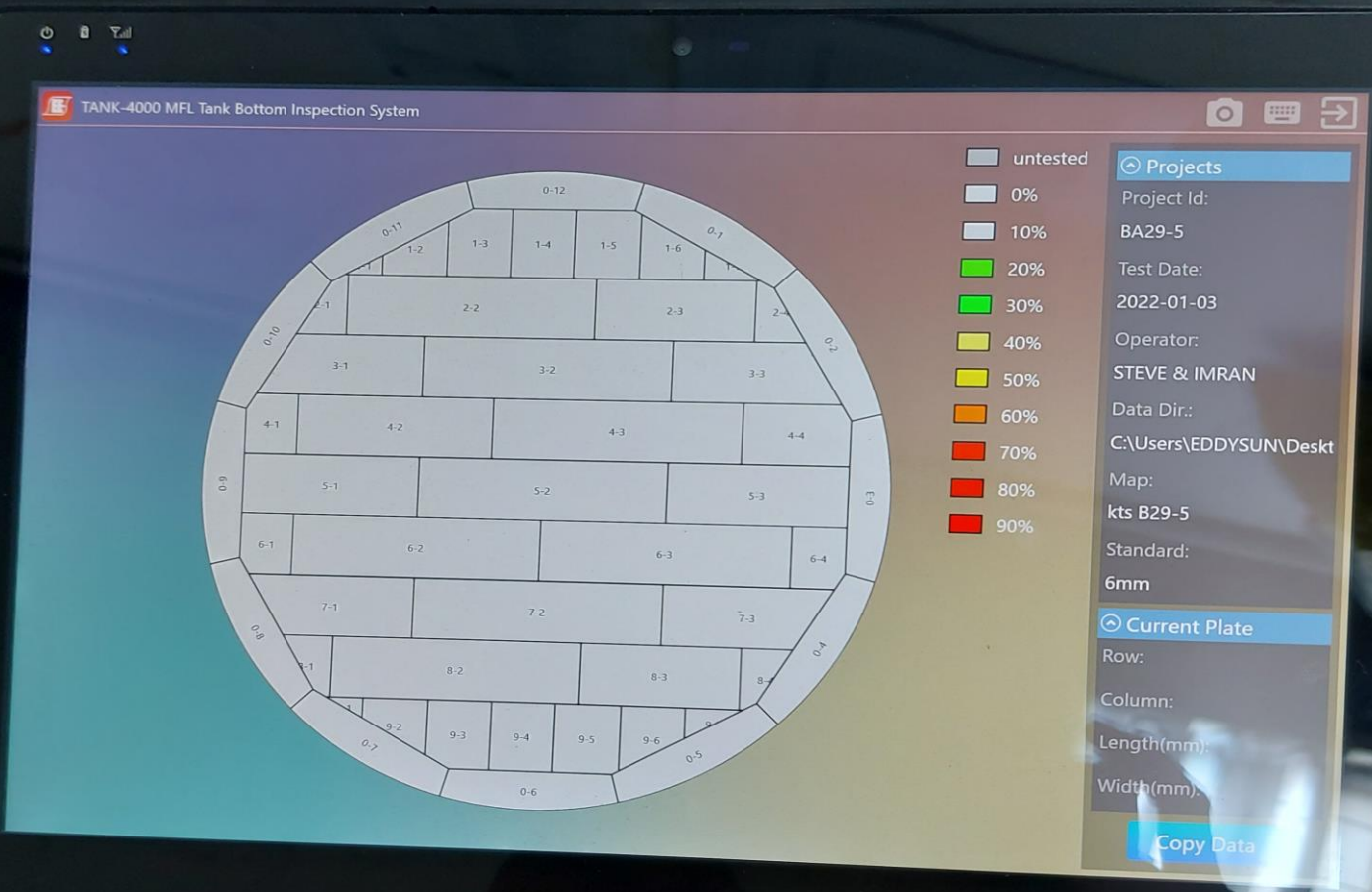
V2 CONSULTING LTD offers its clients with UCI Hardness Test and Hardness Test.

## PROJECTS

- CLP – Unit D1, Black Power Point Station

Materials Involved: 9Cr, 1Cr, 2Cr, PRP





## Magnetic Flux Leakage Test (MFL)

### PROJECTS

- HEC Lamma Power Station Fuel Oil Tanks





## Remote Visual Examination (Borescope)

### PROJECTS

- Hong Kong Offshore LNG Terminal Project





## Offshore Welding Inspection and NDT

### PROJECTS

- Hong Kong LNG Offshore Terminal Project



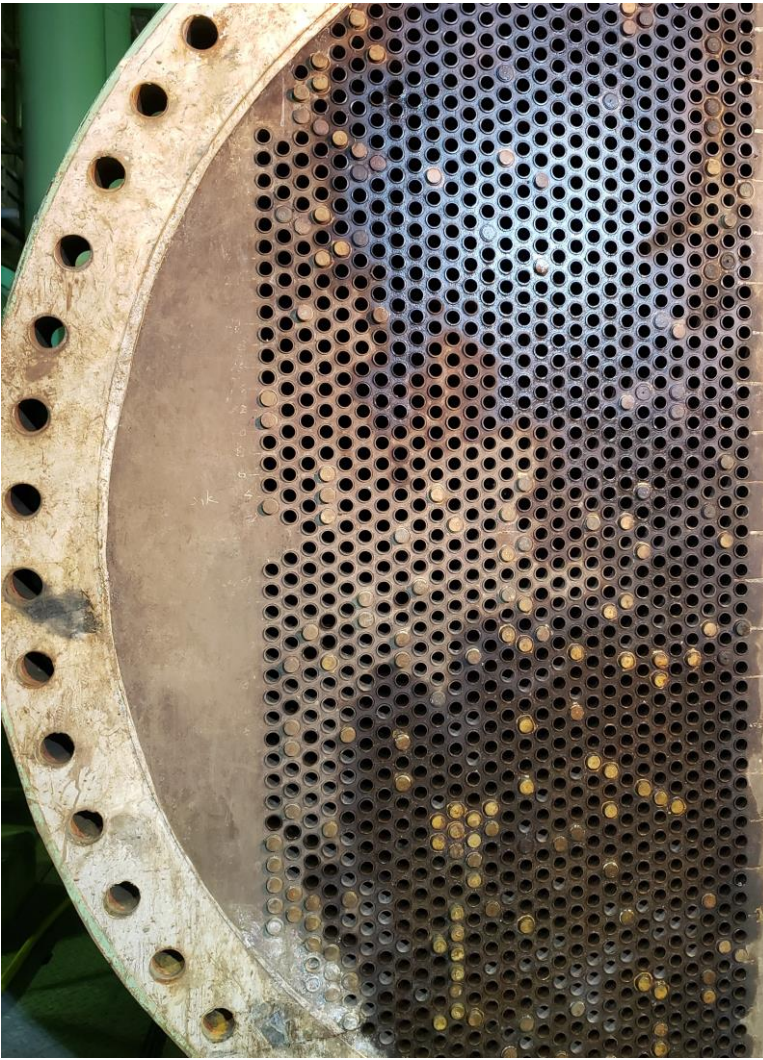


## Phased Array Ultrasonic Testing (PAUT)

### PROJECTS

- Hong Kong LNG Offshore Terminal Project
- CLP BPPS GRS





## Eddy Current Testing (ET)

### PROJECTS

- HEC Lamma Power Station
- CLP Black Point Power Station



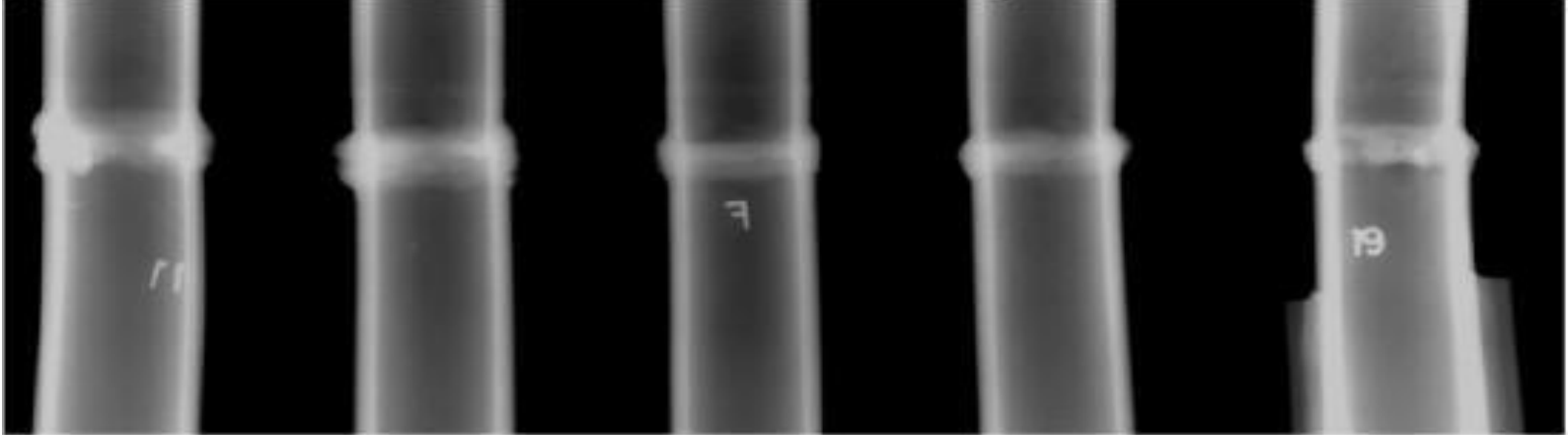
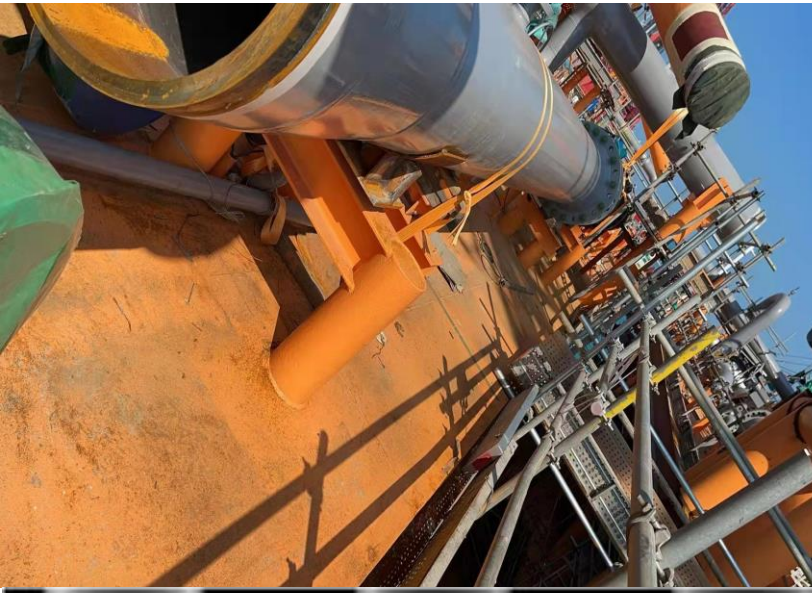


## Conventional NDT (UT, MT, PT)

### APPLICATIONS

- Structures
- Components
- Storage Tanks
- Piping

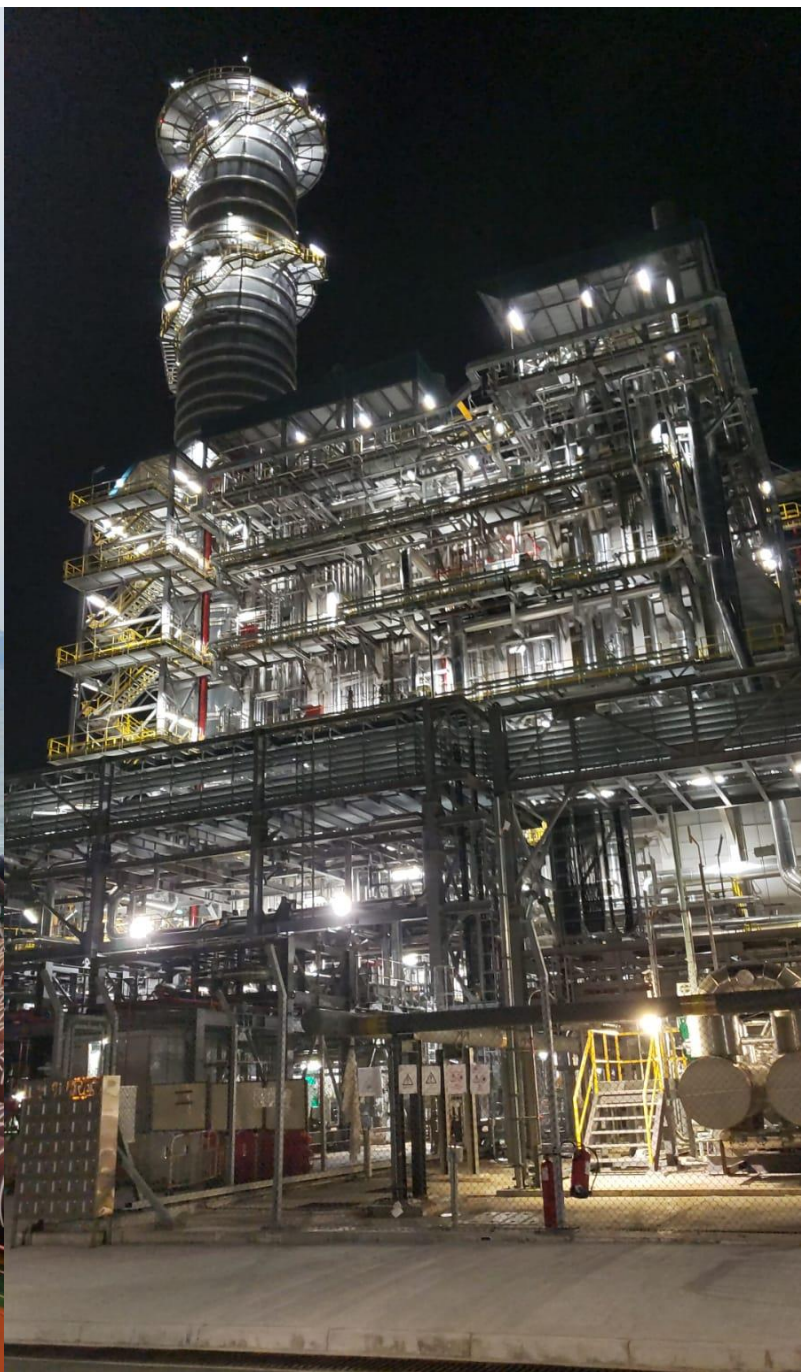




## Conventional NDT (RT)

### APPLICATIONS

- Components
- Piping



**V2 CONSULTING LTD is striving to provide better inspection, testing and certification service in Hong Kong and various locations, offering not only testing, but also solution.**







## SOME PROJECTS/CLIENTS WHICH OUR PERSONNEL HAVE INVOLVED

- Hong Kong Offshore LNG Terminal Project
- Hong Kong Electric Company – Term Contract for NDT (Jun 2020 to till date)
- HEC Lamma Power Station – Unit 10, 11, Unit 12 Expansion
- CLP Black Point Power Station – D1 Project
- Taihei Dengyo Kaisha Ltd – Lamma Power Station Urea Plant
- Wing Kei Structural Metal Works Co Ltd - Design, Construction operation of Kai Tak Sports Park, Contract No. HAB/KTSP/01
- Wing Kei Structural Metal Works Co Ltd - Construction of Hong Kong Post Headquarters Building at Wang Chin Street, Kowloon Bay
- Wing Kei Structural Metal Works Co Ltd - The Construction of Flight Simulator Training Centre of the Government Flying Service
- Wai Luen Development Ltd - Lamma Power Station Light Oil Tank No. 3 & 4
- Control Automation Limited - Black Point Power Station GRS End Station 龍鼓灘末站濾油項目
- Permasteelisa Gartner Saudi Arabia - Riyadh Metro BACS KAFD Iconic Station Project
- YAMAL LNG (The project costs US\$27 billion.)
- Shenzhen LNG (CNOOC) (LNG Tank)
- Guangdong Zhuhai LNG Project
- ZheJiang LNG Projects
- Leighton Nimwan, Sludge Treatment facilities
- King Hang Engineering Limited
- Stonecutter Bridge
- M+ Kowloon
- Tapbo Engineering Limited
- Chevalier Macau Limited (Leighton Asia)
- Majestic engineering Limited (Wynn cotai , Macau )
- Wo Hing engineering Ltd
- Shun Cheong Iron & co Ltd
- KCRC (Kowloon canton rail corporation)
- Elements Mega Tower
- Modern Container Terminal No.9
- Venitian Macau Project, Macau-SAR,China



## TECHNICAL QUALIFICATION HELD BY OUR NDT/INSPECTION PERSONNEL

- QMS Lead Auditor – ISO 9000
- ASNT NDT Level III - MT, PT, RT & UT
- EN ISO 9712/PCN Level III - RT, UT, MT, PT, ET, VT (Pre & In-service Inspection).
- International welding Specialist- International Institute of Welding
- CSWIP Senior Welding Inspector level III The welding Institute, Cambridge.
- Certified welding Educator – American Welding Society
- PCN BS/EN/ISO 9712 Inspector – British Institute of NDT , UK
  - Radiographic film Interpretation –Welds /Dense Material
  - Ultrasonic Testing Welds 3.1,3.2,3.7,3.8 & 3.9 (welds-plate, pipe, T , Nozzle, Node )
  - Magnetic Particle Testing Level-II Pre & In-service Inspection
  - Penetrant Testing –Level-II Pre & In-service Inspection
  - Radiographic Testing Level II (welds )
- Radiation safety Officer , Atomic Energy Regulatory Board ,Gov of India
- RT Level II, by Bhabha Atomic Research center, Gov of India.
- SNT-TC-IA-Level III- RT,UT,MT,PT

### CONTACT US

Email: [info@v2cl.com](mailto:info@v2cl.com)

Web: [www.v2cl.com](http://www.v2cl.com)

Add: Unit C, 4/F, Wai Cheung  
Industrial Center, No.5, Shek Pai  
Tau Road, Tuen Mun, N.T, Hong  
Kong

Tel: 2640 6678  
5500 8464  
5601 7353

